

CLIENT

The Southwick Estate

LOCATION

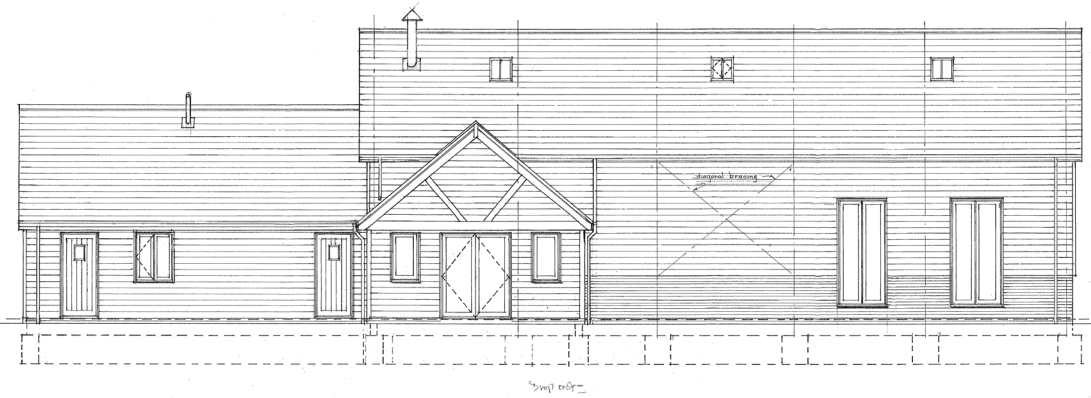
Beckford Lane, Southwick,
Fareham

VALUE

£558K

DATE

February 2022
August 2022



CASE STUDY

Lovelocks Barn Shooting Lodge.

About the project.

During the appropriate seasons, the Southwick Estate organises and manages shooting events on their land. This new build project is to provide the shooting club with a lodge to form their base.

The existing building was demolished by the Client, prior to our commencement on site.

Works comprise pad foundations and strip footings, the construction of a steel frame with timber frame infill, clad with timber cladding together with a traditional tiled pitched roof.

It will provide the users with a single-storey, large hall for events, kitchen space for catering, drying facilities for wet clothing, toilet and shower facilities and a ground floor reception area.

The internal finishes are quite domestic in nature with stone tiled flooring to the main hall, skimmed plasterboard walls and a vaulted ceiling.

We have changed the heating system to being more efficient and economical, thus saving the Client money during the preconstruction phase. It also features a log burner, hence the chimney.

There is currently no external works in the contract, but that may change along the journey.

The scheme is very local for us, being about half a mile from the office, as the crow flies.

